



Name: Gunnar Soderholm

Organization: Environment and Health Administration in the City of Stockholm

Title/Position: Value Pricing Program Manager

Email: Gunnar.Soderholm@stockholm.se

Since 1 Dec 2006, Gunnar Soderholm has been the head of the Environment and Health Administration in the City of Stockholm. After practice in a local court, he was the lawyer of the Swedish Metalworkers Union during the eighties. He began to work in the City Hall of Stockholm as a political assistant to the deputy mayor for real estate. He became the head of the public trusty committee in the City of Stockholm 1993. He was the management director for the Housing agency in Stockholm 1996 - 2002. Between 2002 and 2006 was he the deputy CEO for the City of Stockholm. Among other things, he was responsible for the congestion charging project, housing and ICT development in the City.

STOCKHOLM
winner 2010



EUROPEAN
GREEN CAPITAL



THE CITY OF STOCKHOLM



Sweden 9,5 Milj

410 335 km² 22 inv/ km²

Stockholms län

County of Stockholm 2,1 Milj

6519 km² 299 inv/ km²



City of Stockholm

890 000 188 km² 4300 inv/km²

Söderort 68 km² 3000 inv/km²

Västerort 83 km² 3600 inv/ km²

Innerstan 36 km² 8500 inv/ km²

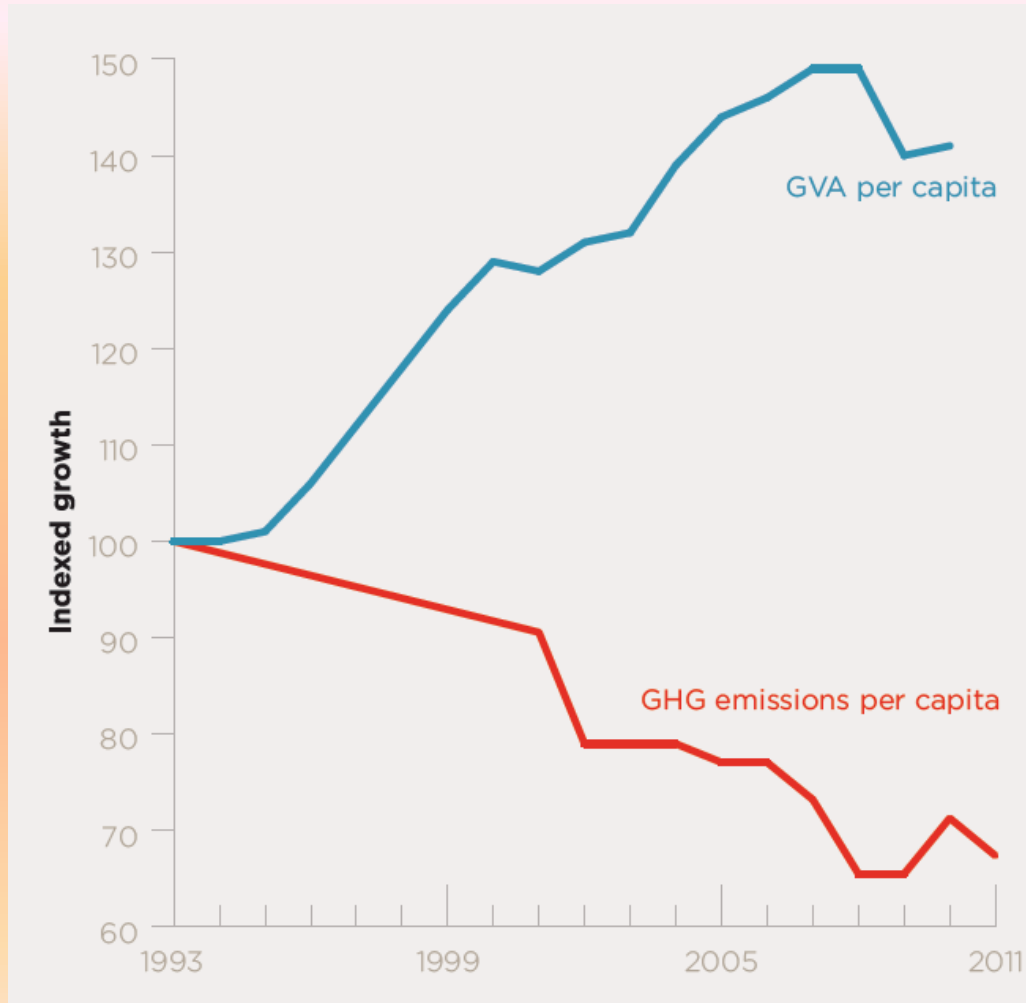


Vision 2030 combining growth with sustainable development

- 250 000 more citizens
- Denser city
- Fossil free 2050
- Waste use – recycling
- Urban structure and green belts
- Integrated sustainable solutions
- Public Awareness



High economical growth and still significant lower CO2-emissions



Goals and achievements

Tonnes CO₂-ekv per capita



Long-term perspective. Again!



Hammarby Waterfront Eco district from 1990



Royal Seaport!

An eco district with 10 000 apartments



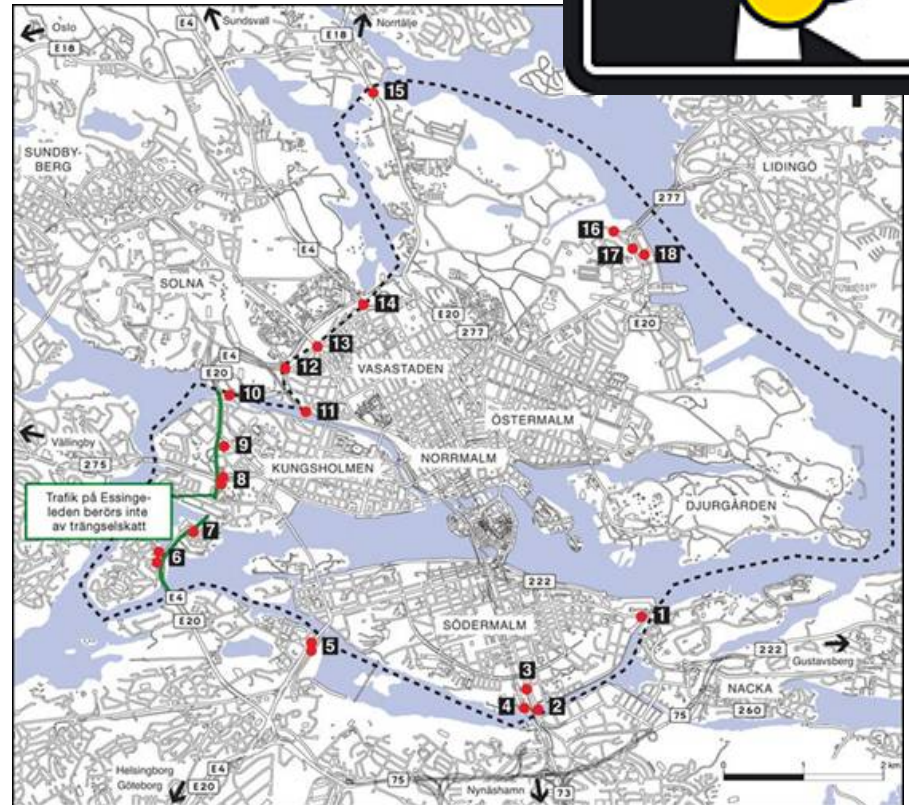
Stockholm has 100 times better air quality today compared with 1965



Congestion charges



- 20 % decrease in traffic
- 10 – 14 % decrease of emissions
- 2 – 10 % better air quality
- Less human exposure
- From huge opposition to broad majority in favor



Congestion charges and times

PEAK PERIODS

07:30-08:30, 16:00-17:30

SEK 20

CNY 20 (30)

SEMI PEAK PERIODS

07:00 -07:30 , 08:30 – 09:00

15:30- 16:00, 17:30-18:00

SEK 15

CNY 15 (22)

MEDIUM-VOLUME PERIODS

06:30-07:00, 18:00-18:30

SEK 10

CNY 10 (15

09:00 – 15:30

SEK 10

CNY 10 (10)

MAXIMUM CHARGE:

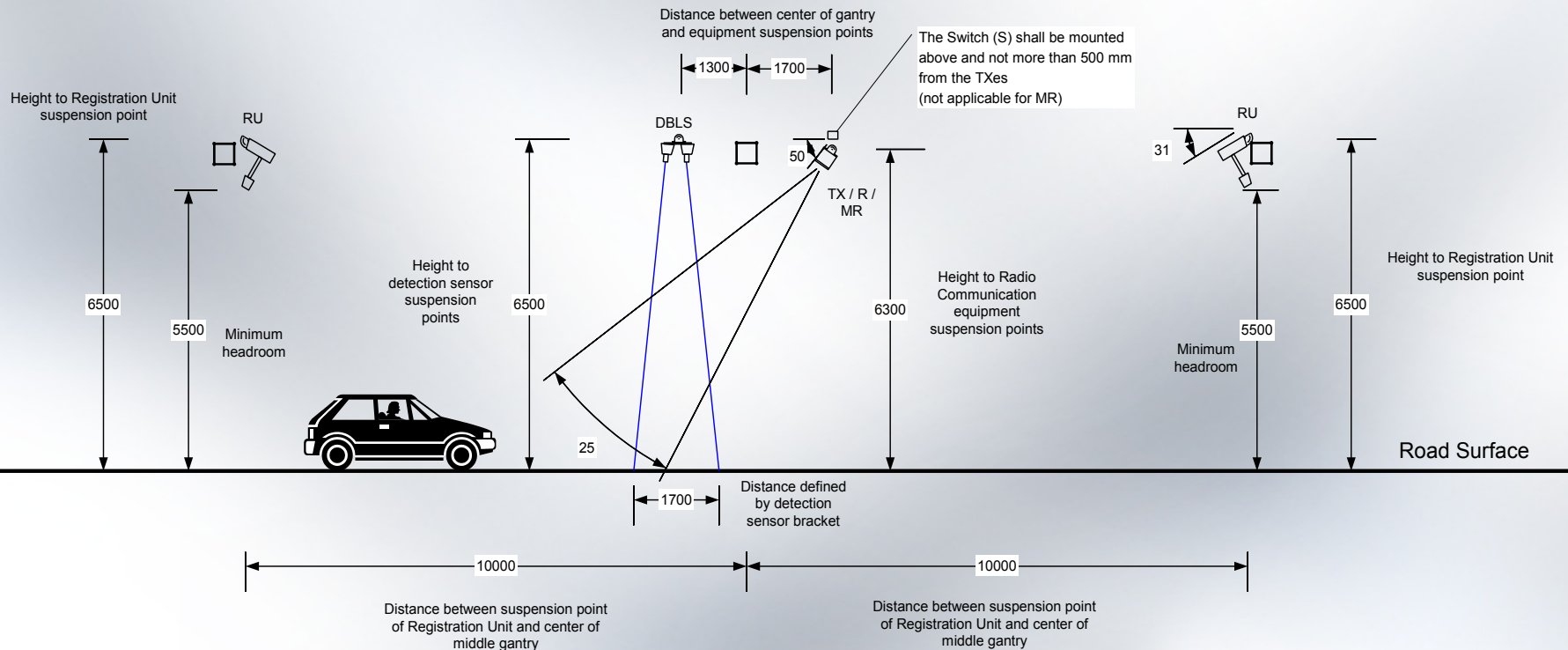
SEK 60/day

CNY (90 or 105)

(suggestion)

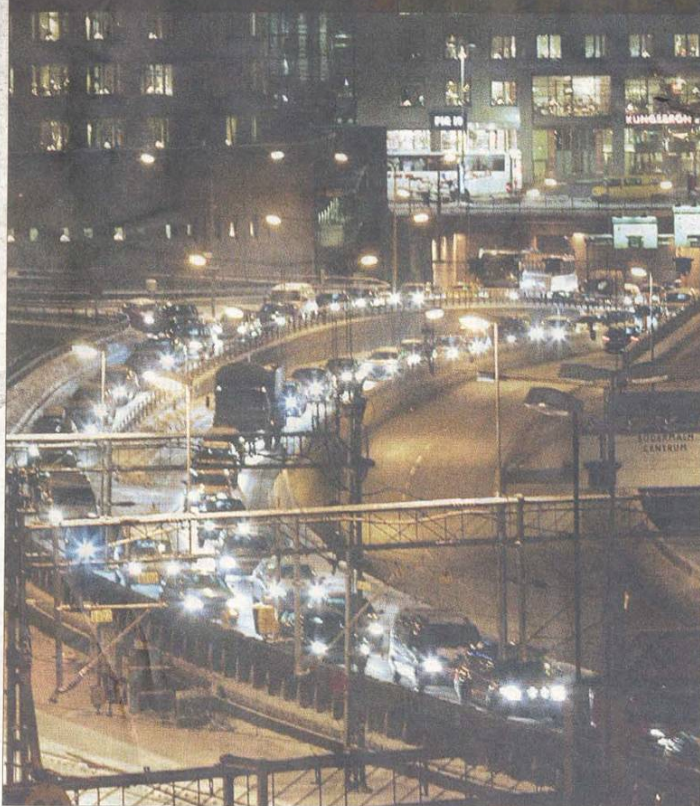
NO CHARGE Evenings, Saturdays, Sundays, holidays

Vehicle identification process



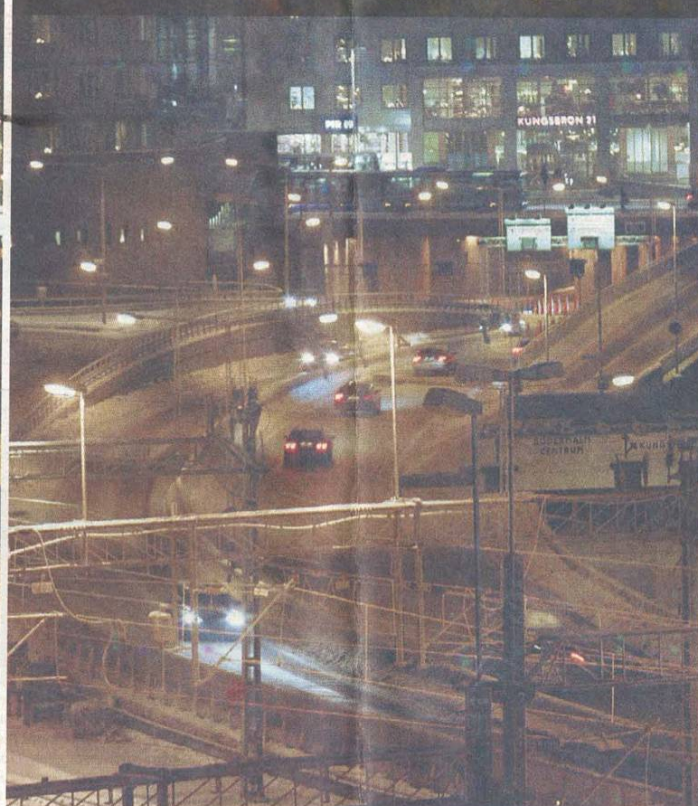
Före

KLARA STRANDSLEDEN 16.30 MÅNDAG 2 JANUARI



Efter

KLARA STRANDSLEDEN 16.30 TISDAG 3 JANUARI



Var fjärde bil försvann

600 000

500 000

400 000

300 000

200 000

100 000

-

Number of passages per day

Numbers/day

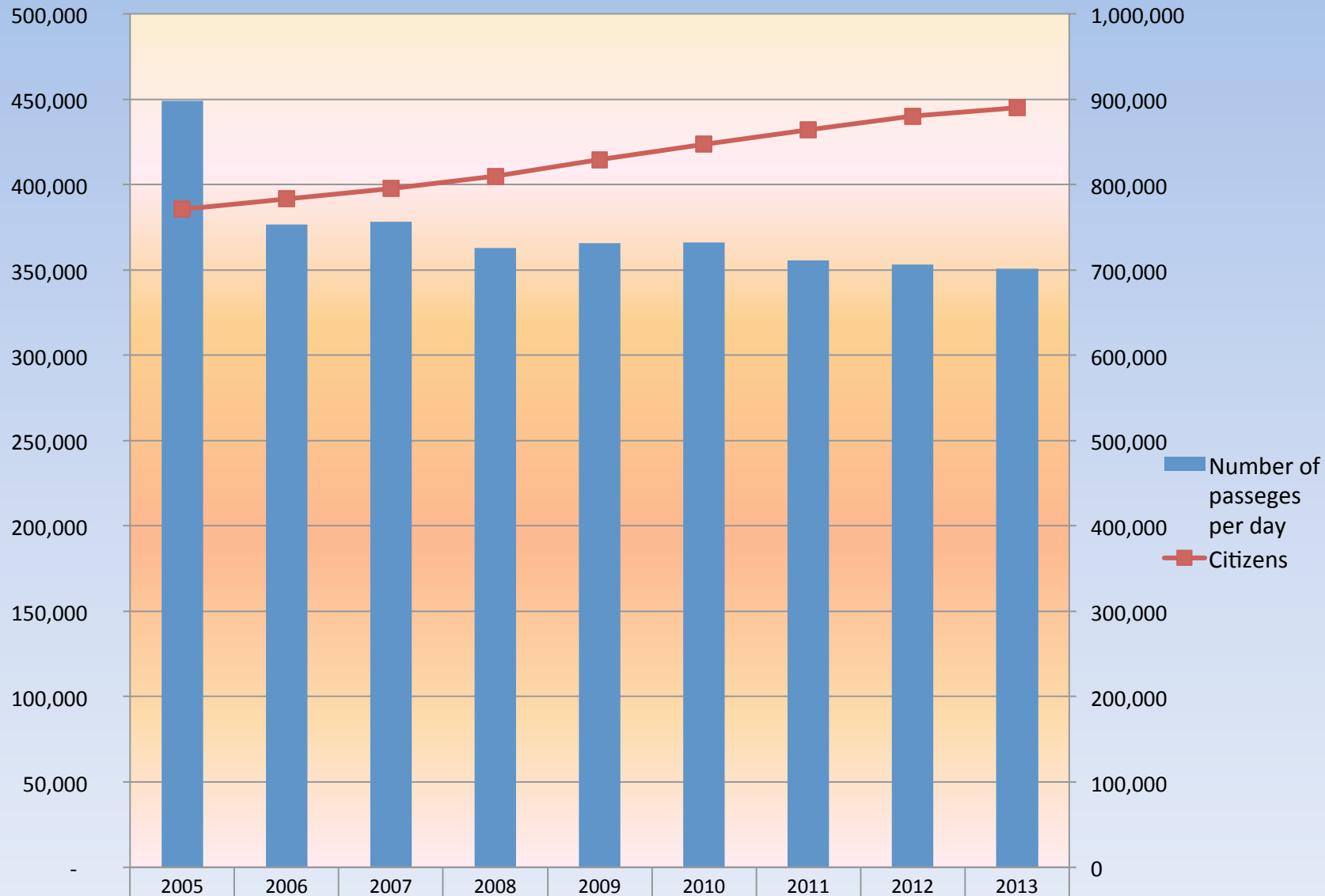
Clean cars

jan-05 apr-05 jul-05 okt-05 jan-06 apr-06 jul-06 okt-06 jan-07 apr-07 jul-07 okt-07 jan-08 apr-08 jul-08 okt-08 jan-09 apr-09 jul-09 okt-09 jan-10 apr-10 jul-10 okt-10 jan-11 apr-11 jul-11 okt-11 jan-12 apr-12 jul-12 okt-12 jan-13 apr-13 jul-13 okt-13



THE CITY OF STOCKHOLM

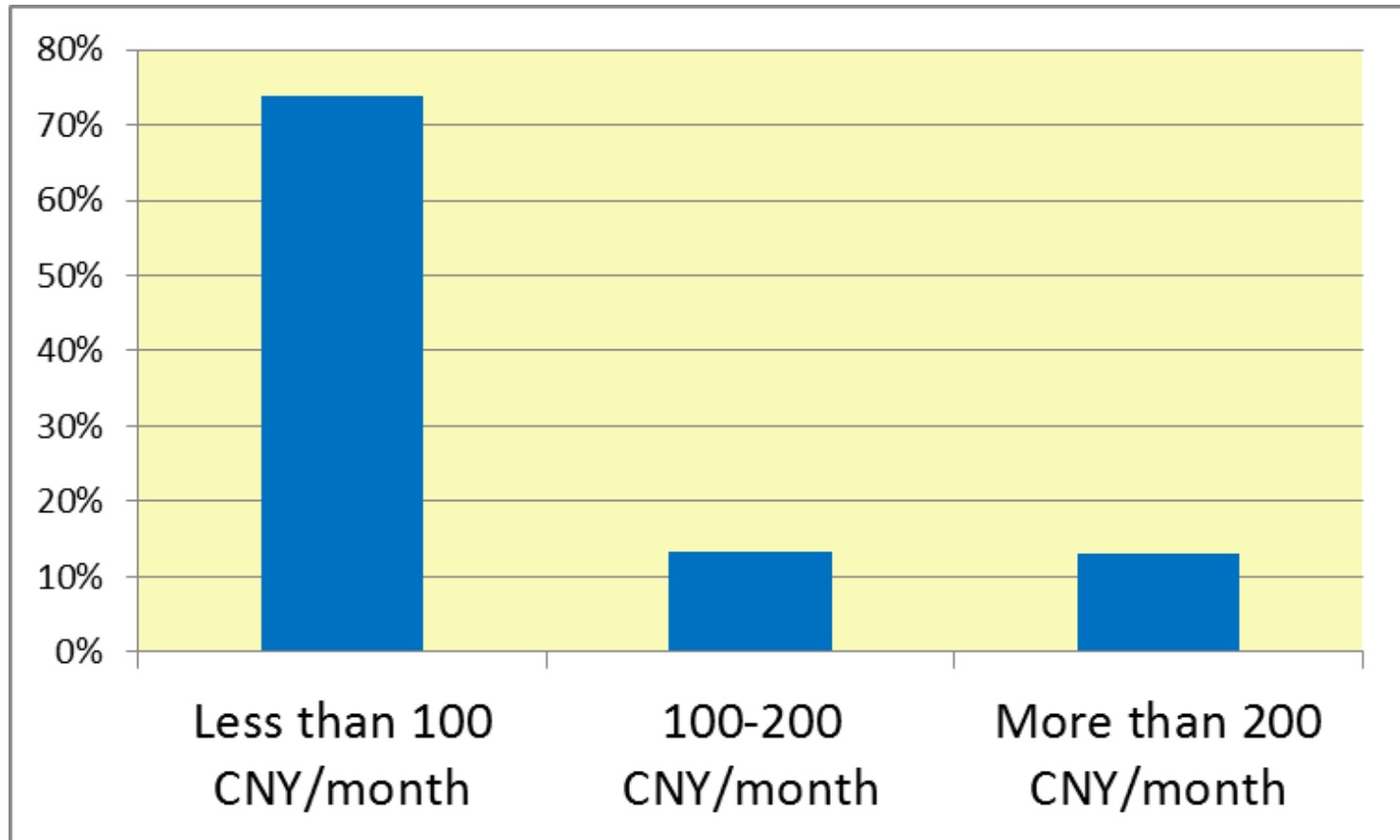




	2005	2006	2007	2008	2009	2010	2011	2012	2013
Number of passages per day	448,931	376,805	378,277	362,786	365,540	366,014	355,763	353,240	350,900
Citizens	771,038	782,885	795,163	810,120	829,417	847,073	864,324	880000	890,000



How much do pay in congestion tax per month?

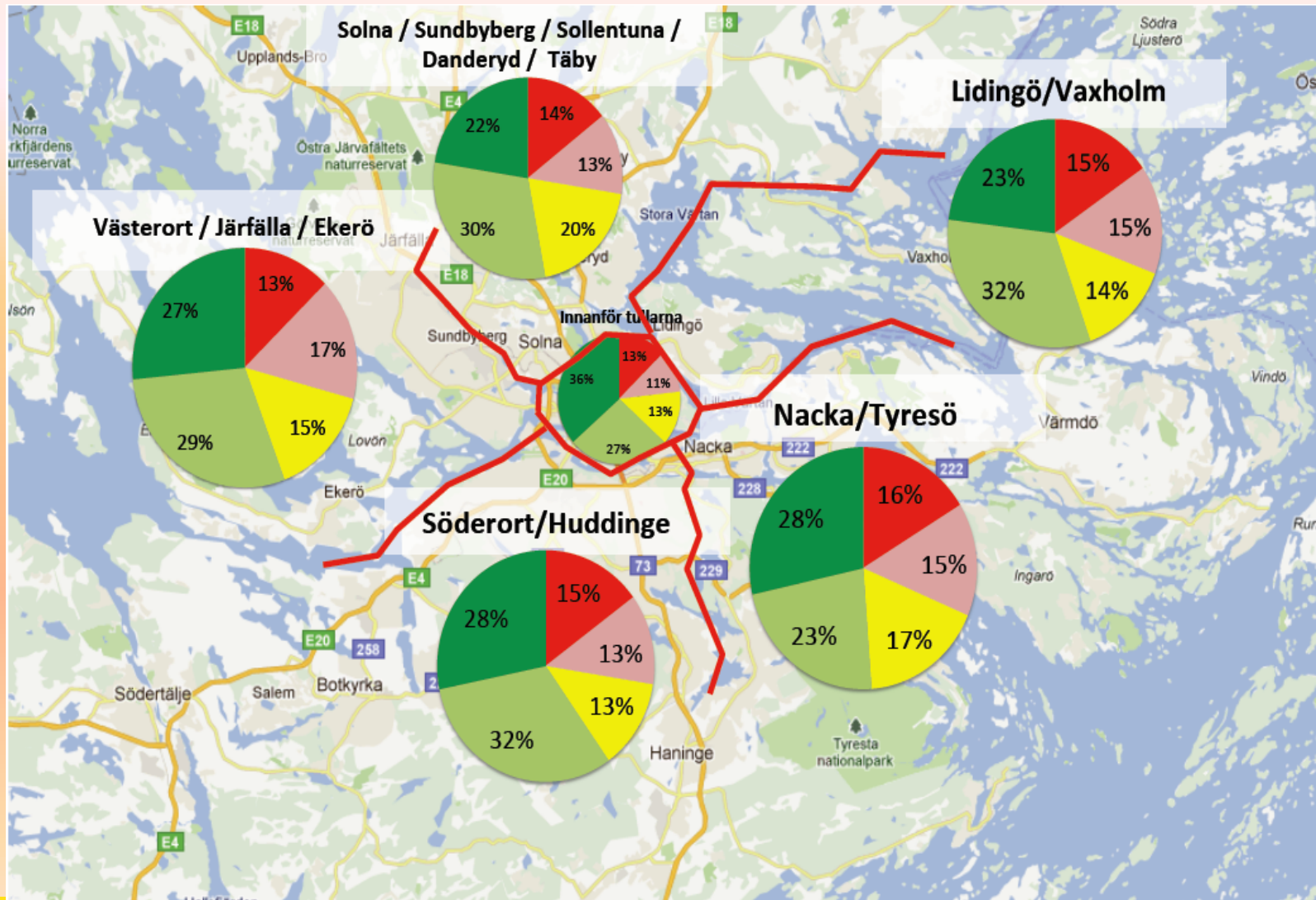


All kinds of fears

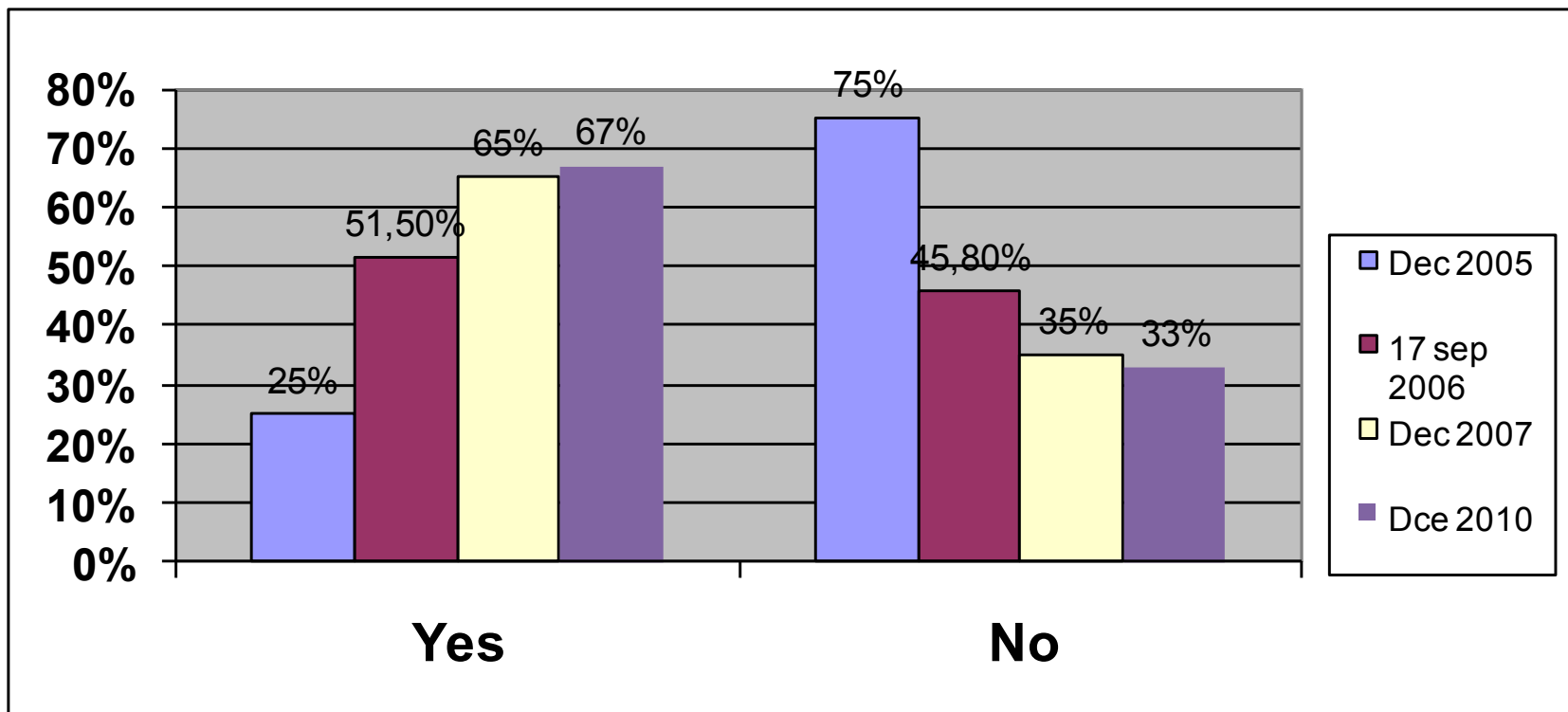
- 1000 appeals/day
- Stolen license plates
- No one will pay
- Everyone is going to cheat
- It will not work technically
- The authorities will monitor (spy on) every motorist
- The retailers would go bankrupt
- Companies will move from city center



Support by city area



Public opinion 2005 – 2010



Why was the trial a success?

- It worked technically very well
- People have known what to do
- The traffic effects have exceeded the expectations
- People have seen the benefits by themselves
- Continuously measuring didn't give room for rumour
- It was for a just cause



- 50 % increase on peakhours
- Congestion tax on the by pass
- Tax in peak hours on Baltic–Mälaren line



Förändrade trängselskatter i Stockholm

Underlag för 2013 års Stockholmsförhandling



I samarbete med:



2013-06-26

New metro lines financed by rised congestion tax



Gothenburg congestion charges from 1 jan 2013



Revenue

- Stockholm

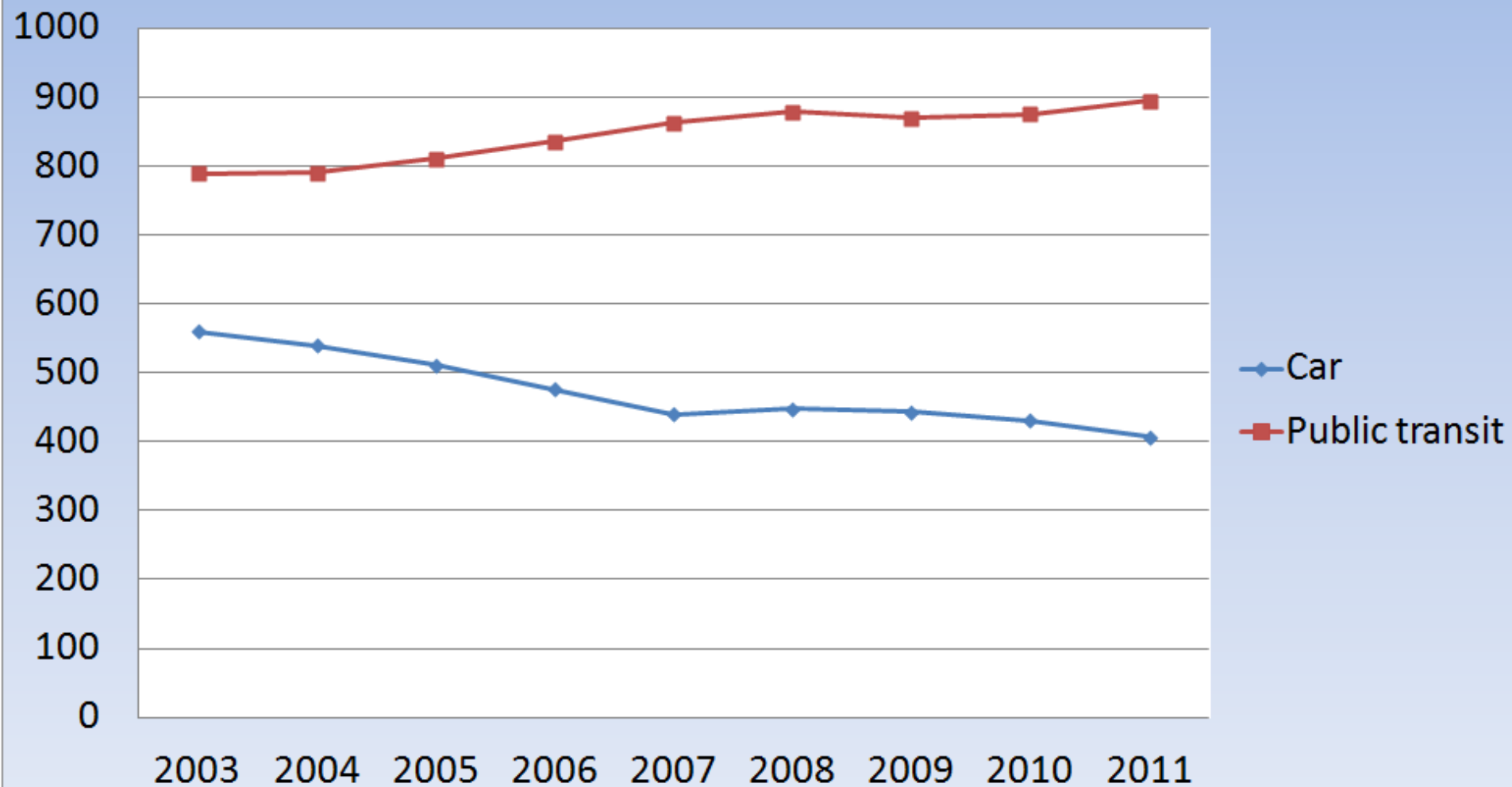
- 740 m CNY 2012
- 104 m CNY penalty fee

- Gothenburg

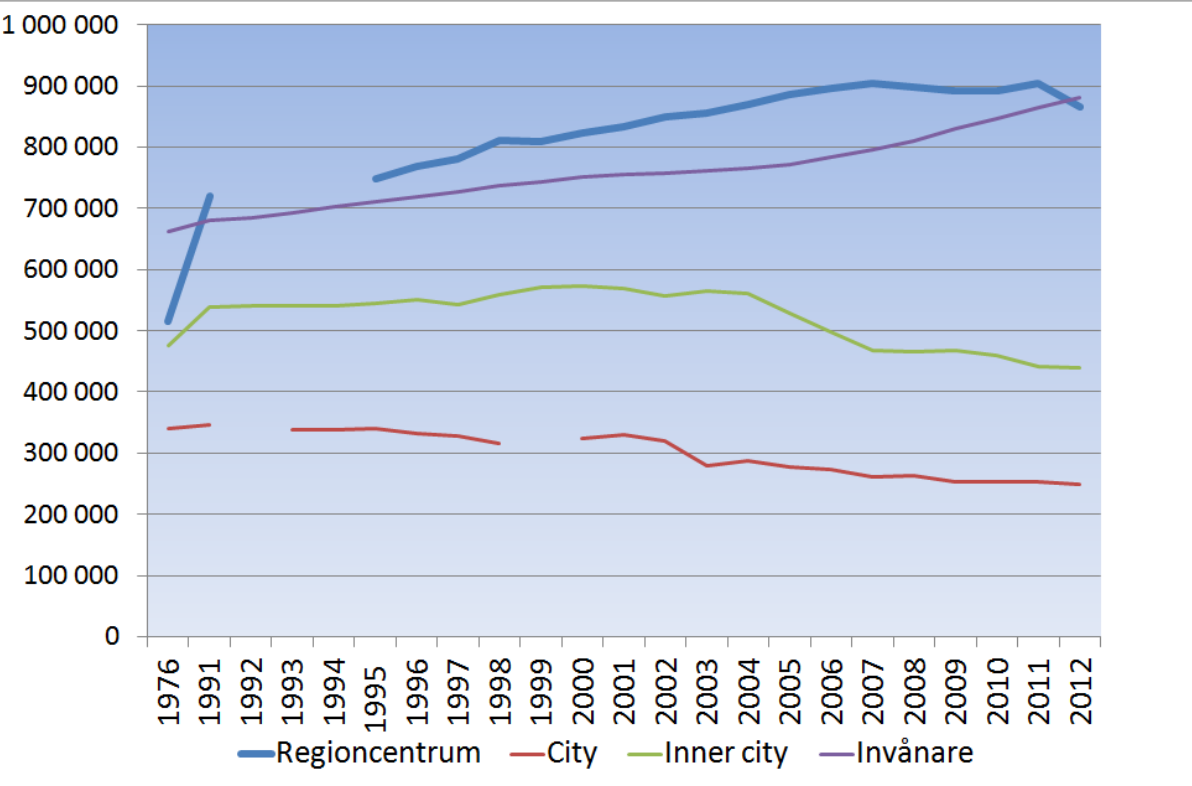
- 680 m CNY (2013)
- 109 m CNY penalty (2013)



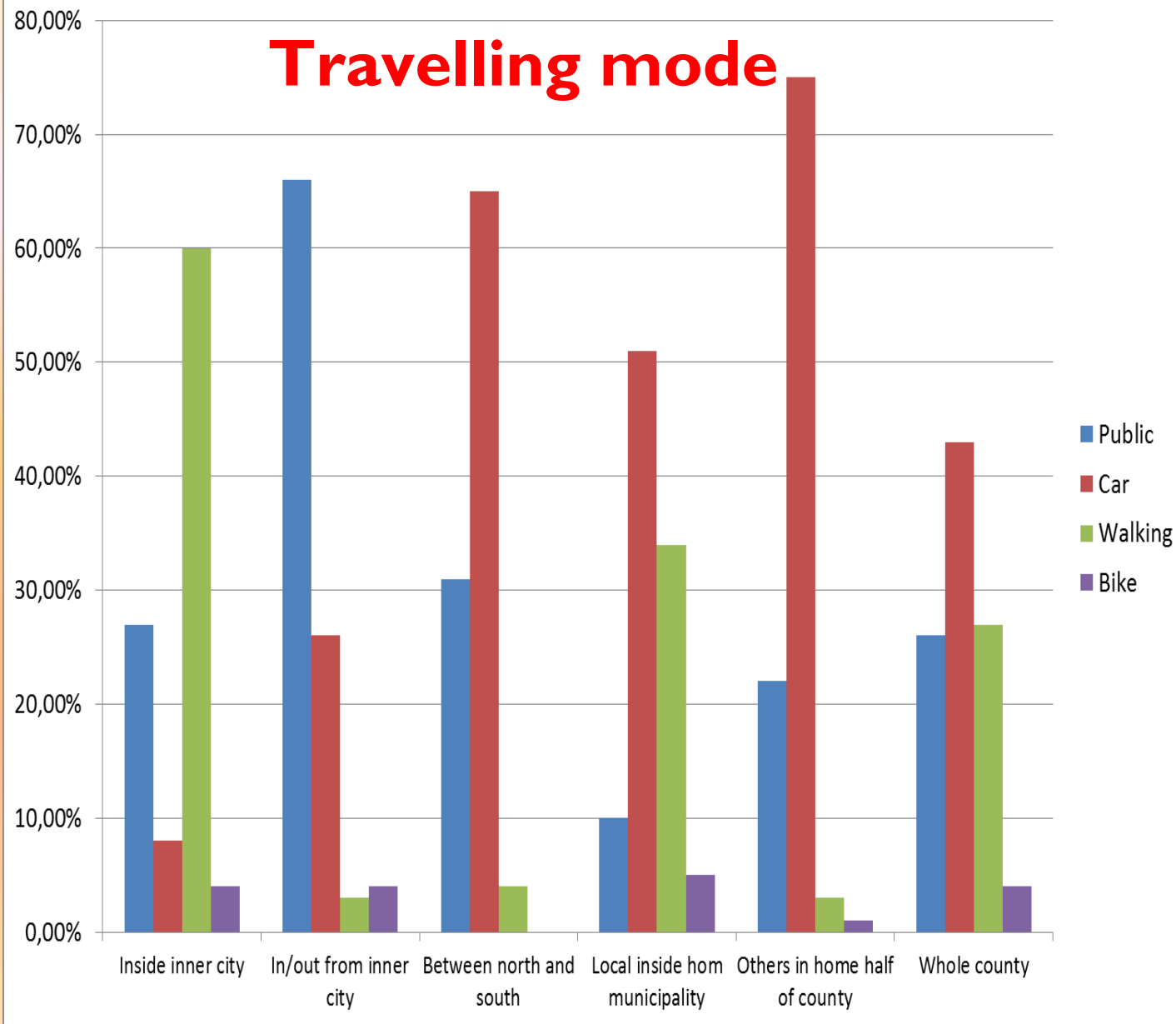
Traffic in and out from inner city 06:00 - 21:00

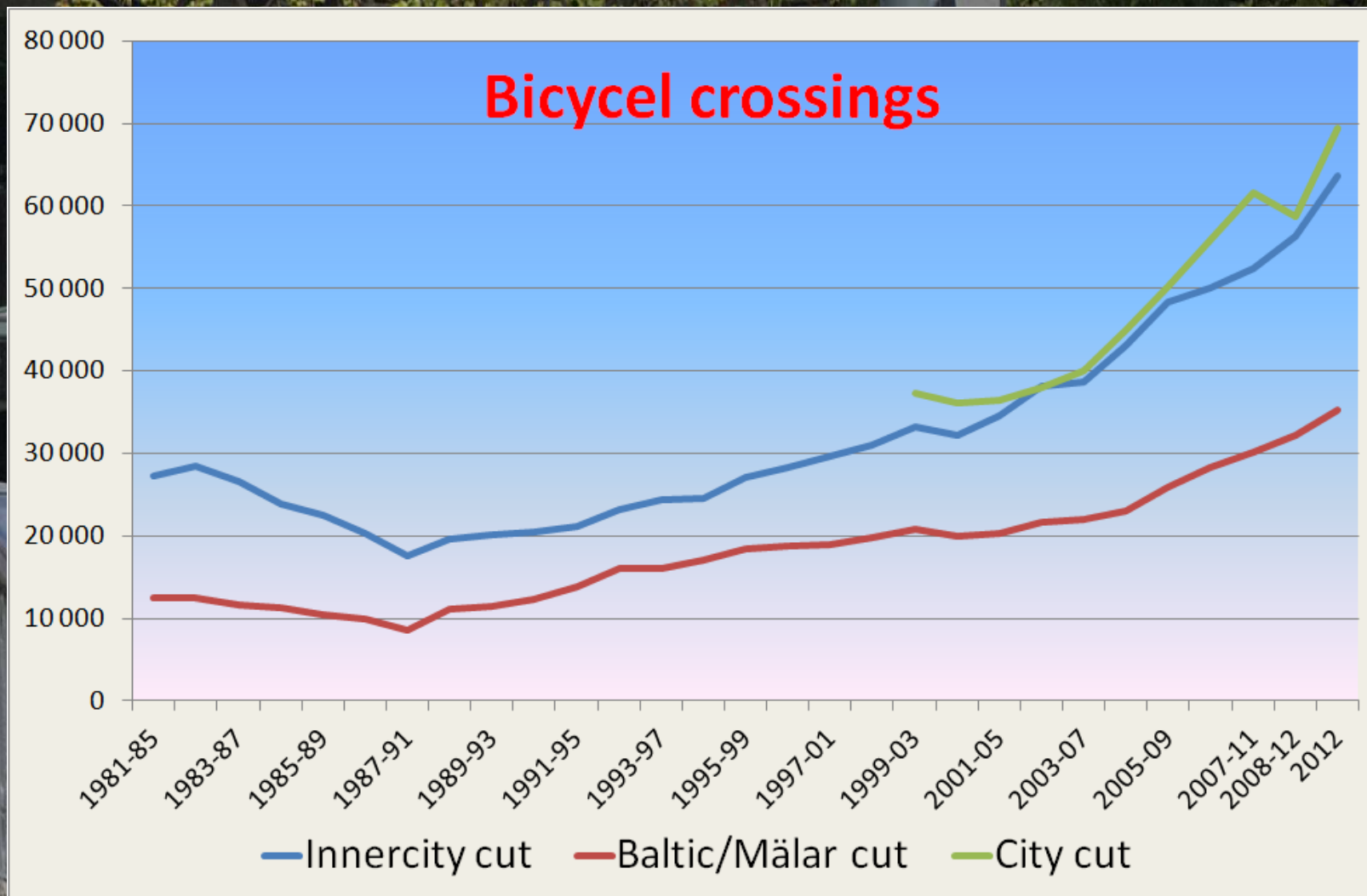


Traffic flow 1976 - 2012

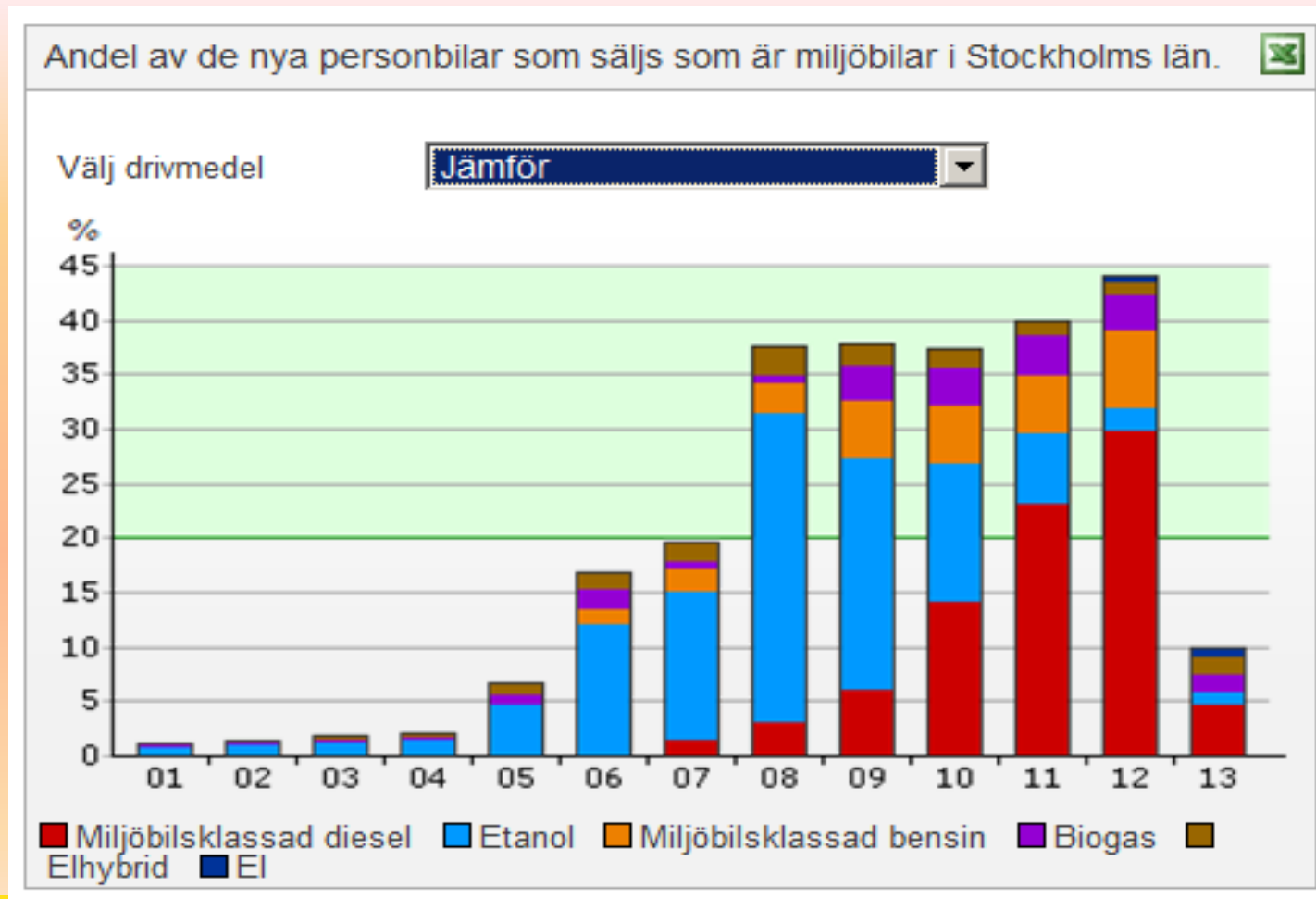


Travelling mode





Sold new clean cars 2001 – juli 2012 Stockholm county



Electrical vehicles, plug in hybrids, nnew infrastructure



Environmental zone in Stockholm

Heavy (over 3,5 ton) trucks and buses



No traffic outside main roads between 2200-0600

Första registreringsår oavsett land	Enligt huvudregeln	Euro 3 (MK 2000)	Euro 4 (MK 2005)	Euro 5 + EEV (MK 2008)	Euro 6 eller bättre
2004	2010	2012	2016		
2005	2011	2013	2016	2020	
2006	2012	2014	2016	2020	
2007	2013	2015	2016	2020	
2008	2014		2016	2020	
2009	2015		2016** el 2017*	2020	
2010	2016		2016** el 2018*	2020	
2011	2017			2020	
2012	2018			2020	
2013	2019			2020** el 2021*	Obegränsad
2014	2020			2020** el 2022*	Obegränsad
2015	2021				Obegränsad
2016	2022				Obegränsad
2017	2023				Obegränsad
2018	2024				Obegränsad

THANK YOU!

www.stockholm.se/international

gunnar.soderholm@stockholm.se



THE CITY OF STOCKHOLM



PAGE 34